



## University on the Baltic

IBBA Methane emission workshop  
September 4th in Kiel Germany



In October 2006 the Centre of Excellence of Biomass (CE Biomass) in Schleswig-Holstein was founded.

The centre will safeguard a sustainable transfer of expertise between the universities of applied sciences in Kiel, Flensburg and Lübeck and the universities of Kiel and Flensburg, as well as between companies, agricultural enterprises and institutions of Land Schleswig-Holstein.

### Mission:

It will establish a sustainable structure for collaboration with a strong network between companies and participating institutions of higher education and act as a central point of contact, coordinating the scientific aspects of biomass exploitation and the technology transfer within this field in Schleswig-Holstein

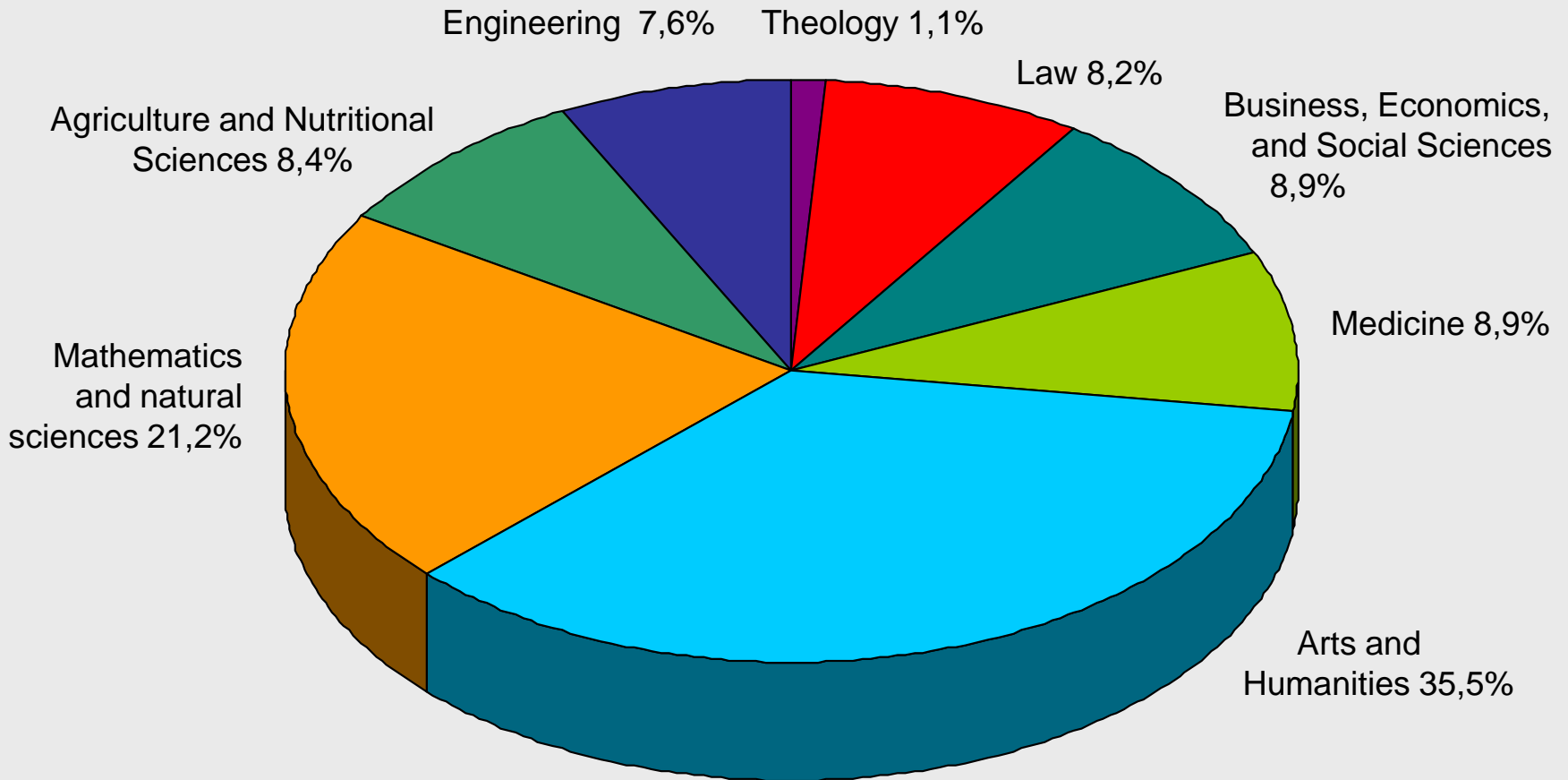


## What is CAU?

- Schleswig-Holstein's flagship university.
- A university with over three centuries of tradition: the CAU was founded in 1665.
- A large university: with degree courses in 156 subjects, some 23,000 students, 384 professors, faculty and staff of 3,177 and a 153 million Euro budget.
- A partner with business: cooperating with local enterprises and chambers of industry and commerce.
- A partner in the promotion of sporting excellence.
- A participant in the »family-friendly university« audit.
- 2 Clusters of Excellence, 1 Graduate School

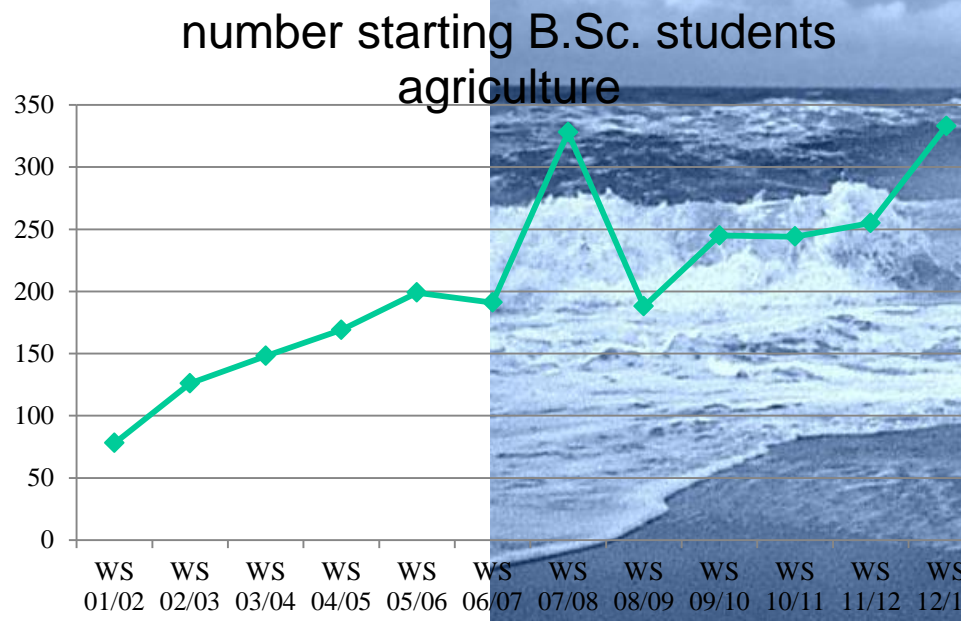
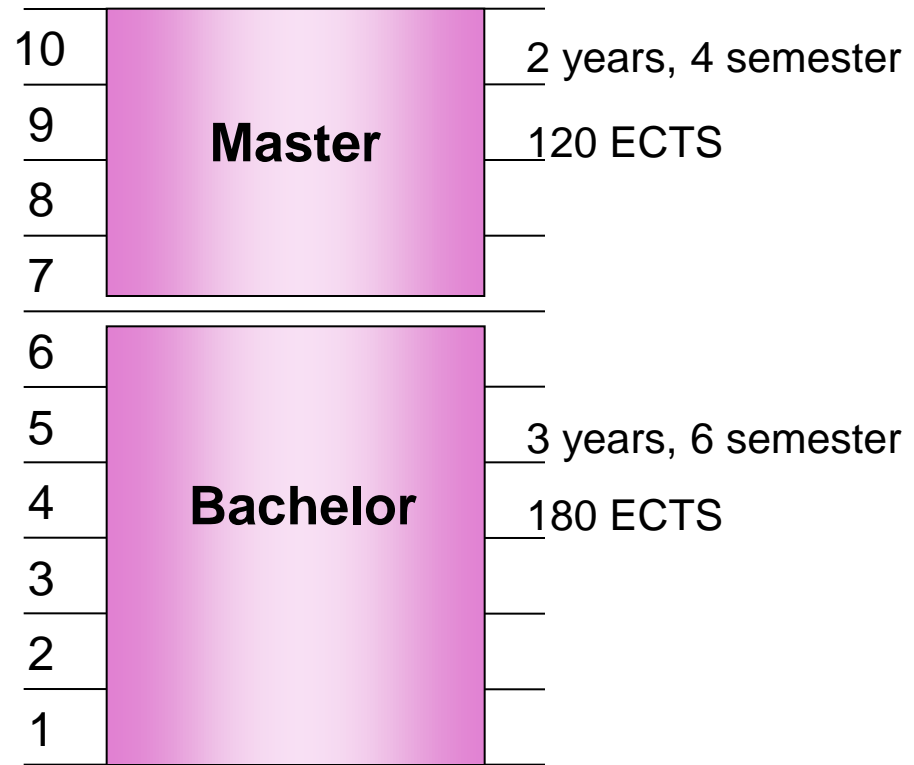


### Distribution of students across the faculties

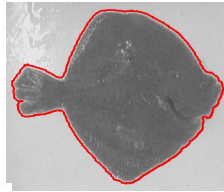
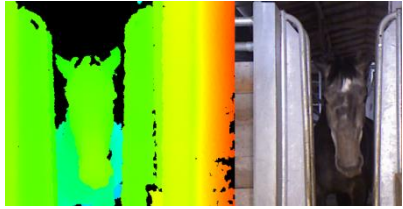


Total no.of students in winter term 2011 /2012: 24.323

# Faculty: Agriculture and Nutritional Science



## Research areas



## Precision Livestock Farming

## Aquaculture

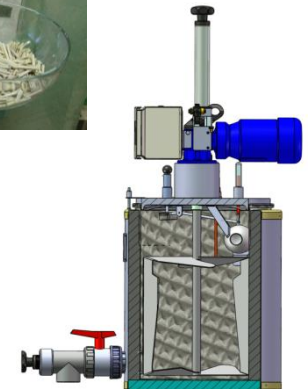
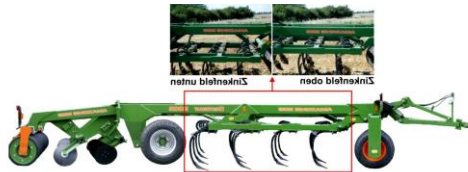
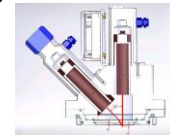
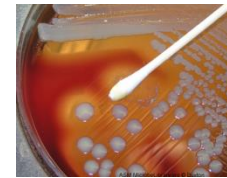
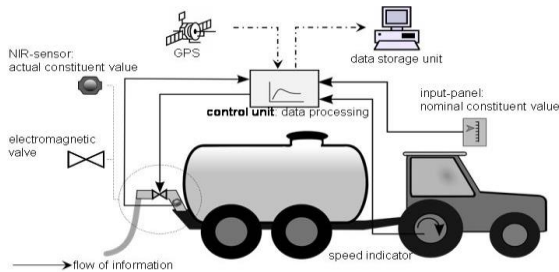
## Milking technology

# Platform Technologies and Methodologies

## Prototyping

## Precision Farming

## Biogas process control / Bio energy



# Actual Location



Drathenhof & Open air museum Molfsee



# Morning time schedule

- 08:00 - 09:00 Registration
- 09:00 - 09:30 Welcome and Introduction on 2nd IBBA-Workshop  
**Eberhard Hartung, Prof. Dr.**  
Kiel University and Representative R&D of the Schleswig-Holstein Centre of Biomass (CEBio), Kiel, Germany
- 09:30 - 10:15 Company Presentations  
Boreal Europe BV - 15 min  
BMF Haase Energietechnik GmbH - 10 min  
NPL - National Physical Laboratory - 10 min  
AgroTech - 5 min
- 10:15 - 10:45 Coffee break
- 10:45 - 11:15 Methane Emission from Swedish Biogas Plants  
**Magnus Andreas Holmgren**  
SP - Technical Research Institute of Sweden
- 11:15 - 11:45 Methane Emission from Danish Biogas Plants  
**Lars Jørgensen**  
Danish Gas Technology Centre, Denmark
- 11:45 - 12:15 Scientific measurements of methane emissions with remote and on-site methods in comparison  
**Tanja Westerkamp, Dr.**  
DBFZ - The Deutsches Biomasseforschungszentrum, Germany
- 12:15 - 13:45 LUNCH